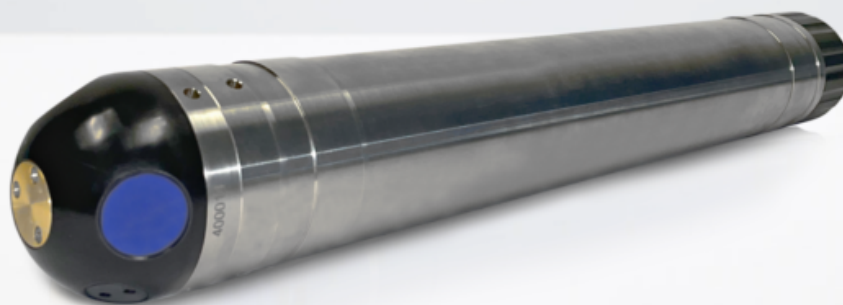


## Aquadopp 2 - 6000 m



**NEW!**



### **Courantomètre ponctuel grands fonds conçu pour les longs déploiements avec corps en titane**

With all the features and capabilities of the standard Aquadopp, the deepwater Aquadopp 6000 m current meter has been used and proven by oceanographers around the world for almost 20 years. Thanks to innovative data diagnostic features for challenging environments, it provides exceptionally high-quality 3D currents in a form factor that is easy to install in any type of mooring line configuration, or simply attached to a bottom or surface platform.

Raw magnetometer data can be stored for post calibration of compass when used without the inductive modem option.

## Highlights

- ✓ Full ocean-depth single-point current meter
- ✓ Titanium housing
- ✓ Diagnostics mode for mooring performance evaluation

## Applications

- ✓ Studies of deep-water currents
- ✓ Studies of tidal currents
- ✓ Attached to mooring lines
- ✓ Measurements of unaffected currents from physical structures
- ✓ In conjunction with riser monitoring systems
- ✓ Alternative to conventional current meters with errors due to fouling
- ✓ Combination of currents and high-accuracy CTD data
- ✓ Near-bed current measurements from landers
- ✓ Deep ocean mining support

## Technical specifications

### → Water velocity measurements

Cell size	0.75 m
Maximum number of cells	1
Distance to measurement	1.0-6.0 m (user-selectable)
Velocity range	±1 m/s, ±2.5 m/s, ±5 m/s
Accuracy	±1% of measured value ±0.5 cm/s
Horizontal velocity precision (consult instrument SW)	Typ. 1 cm/s
Maximum sampling rate (output)	2 Hz
Internal sampling rate	4 Hz

### → Echo intensity

Sampling	Same as velocity
Resolution	0.5 dB
Dynamic range	90 dB
Transducer acoustic frequency	2 MHz
Number of beams	3
Beam width	1.7°

### → Sensors

Temperature:

Temp. range	-4 to +40 °C
Temp. accuracy/resolution	0.1 °C/0.01 °C
Temp. time response	<1 min

Compass: Solid State Magnetometer

Accuracy/resolution <2° for tilt < 30° / 0.01°

Tilt: Solid state accelerometer

Accuracy/resolution 0.2° for tilt < 30° / 0.01°

Maximum tilt 3D

Up or Down Automatic detect

Pressure: Piezoresistive

Range 6000 m

Accuracy/precision 0.25% FS / 0.005% of full scale

### → Digital inputs

No. of channels	1
Digital Input format	MicroCat CTD

### → Data recording

Capacity 16 GB

### → Real-time clock

Accuracy	±1 min/year
----------	-------------

Backup in absence of power	4 weeks
----------------------------	---------

### → Data communications

I/O	RS-422
-----	--------

Communication Baud Rate	9600 Baud- 1.2 Mbaud (default 115200 Baud)
-------------------------	--

User control	Nortek Deployment Software or direct ASCII commands, with binary or ASCII data output
--------------	---

### → Software

Operating system	Agnostic
------------------	----------

Functions	Deployment planning, instrument configuration, data retrieval and conversion. Online data display.
-----------	--

### → Power

DC input	9-24 VDC
----------	----------

Absolut maximum DC input	26 VDC
--------------------------	--------

Maximum peak current	4.5 A
----------------------	-------

Power consumption	Consult Nortek Deployment Software
-------------------	------------------------------------

Sleep current	< 10 uA
---------------	---------

Transmit power	0.45-45 W, adjustable over 20 dB
----------------	----------------------------------

### → Batteries

Internal battery capacity	1-3 x 50 Wh (Alkaline); 1-3 x 165 Wh (Lithium); 1-3 x 76 Wh (Li-ion)
---------------------------	--

Battery weight	430g per 50 Wh (Alkaline); 380g per 165 Wh (Lithium); 300g per 76 Wh (Li-ion)
----------------	---

New battery voltage	13.5 VDC
---------------------	----------

### → Environmental

Operating temperature	-5 to +40 °C
-----------------------	--------------

Storage temperature	-20 to +60 °C
---------------------	---------------

Shock and vibration	Shock: IEC 60068-2-27, Vibration: IEC 60068-2-64
---------------------	--

EMC approval	EN IEC 61000-6-2:2019, EN IEC 61000-6-4:2019
--------------	--

Depth rating	6000m
--------------	-------

### → Connectors

Bulkhead (Impulse)	MCBH-8-FS titanium
--------------------	--------------------

Cable	PMCIL-8-MP on 5m (default) polyurethane cable
-------	---

### → Materials

Standard model	Titanium Gr. 5, POM, Naval Brass, epoxy
----------------	---

### → Dimensions (see drawings for details)

Maximum housing diameter	84 mm
--------------------------	-------

Maximum length	623 mm
----------------	--------

### → Weight

Weight in air (without batteries) 7600 g

Weight in water (without batteries) 4350 g

### → Arrangements

D2VC

Deep water, 2Mhz, Vertical orientation, Current meter